

MODULAR GEOTECHNICAL LOG & MAPPING SYSTEM



www.sgimex.mx

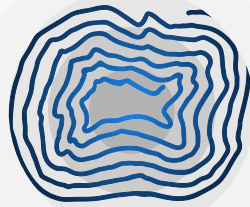
Copyright 2018 by Servicios Geológicos IMEX S.C

VERSION 1.1

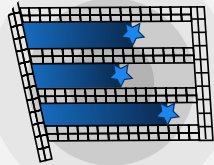
Start Log Rock

PC MODE

TABLET MODE



**Open Pit
Face Mapping**



**Under Ground
Traverse Mapping**



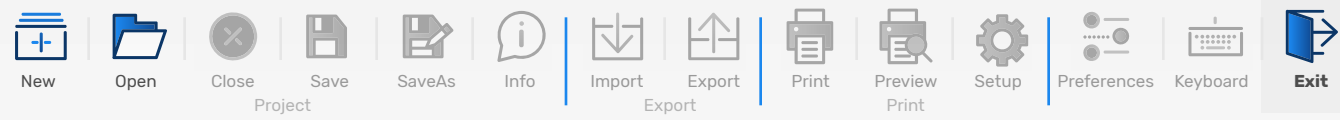
Core Loggin



Monitoring

Log Rock - Open Pit Face Mapping

Files Edit Graph Help



New Project

Files Edit Graph

File

Directory

File Name

General Information

Date

Company Name

Mine/ Project

Open Pit / Sector

Mapped by Add

Preview

Log Rock - Open Pit Face Mapping

Files Edit Graph Help

Info Project |
 Copy |
 Paste |
 Add Bench |
 Delete Bench |
 Join |
 Charact |
 Keyboard

Benches

Bench1 -390

- Window1
- Window1
- Window1
- Window1
- Window1
- Window1

+ Bench1 -390

+ Bench1 -390

+ Bench1 -390

+ Bench1 -390

File	IDX	# STRUCTURES	COLOR	JOIN CONDITION	WATER CONDITION	FRACTURE FREQUENCY	SPACING
Directory	1	3	Green	Gouge less than m thick or Slickenside surface	Completly Dry	0.3	3.333
File Name	1	3	Red	Gouge less than m thick or Slickenside surface	Completly Dry	0.3	3.333
General Inform	1	3	Yellow	Gouge less than m thick or Slickenside surface	Completly Dry	0.3	3.333
Date	1	3	Cian	Gouge less than m thick or Slickenside surface	Completly Dry	0.3	3.333
Company Name	1	3	Gray	Gouge less than m thick or Slickenside surface	Completly Dry	0.3	3.333
Mine/ Project	1	3	Orange	Gouge less than m thick or Slickenside surface	Completly Dry	0.3	3.333
Open Pit / Sector	1	3	Purple	Gouge less than m thick or Slickenside surface	Completly Dry	0.3	3.333
Mapped by	1	3	Teal	Gouge less than m thick or Slickenside surface	Completly Dry	0.3	3.333

Log Rock - Open Pit Face Mapping

Files Edit Graph Help

Info Project | Copy | Paste | Add | Delete | Join | Charact | Keyboard

Benches

Bench1 -390

- Window1
- Window1
- Window1
- Window1
- Window1
- Window1

+ Bench1 -390

+ Bench1 -390

+ Bench1 -390

+ Bench1 -390

Window Mapping 1

Mapping Line

Mapping Line	Station distance	Starts Point coordinate	Face slope orientation
Start point: <input type="text"/>	Start point: <input type="text"/>	Start point: <input type="text"/>	Start point: <input type="text"/>
Start point: <input type="text"/>	Start point: <input type="text"/>	Start point: <input type="text"/>	Start point: <input type="text"/>
Start point: <input type="text"/>			

Mapping Line

Start point: Start point:

Log Rock - Open Pit Face Mapping

Files Edit Graph Help

Info Project |
 Copy |
 Paste |
 Add Bench |
 Delete Bench |
 Join |
 Charact |
 Keyboard

Benches

Bench1 -390

- Window1
- Window1
- Window1
- Window1
- Window1
- Window1

Bench1 -390

Bench1 -390

Bench1 -390

Bench1 -390

No.	Structure type	Dist. From Start (m)	Dip (deg)	Dip Direction (deg)	Persistence	Roughness (Jr)	Join Wall Streight	Apperture	Join Wathering	Alteration (Ja)	Infill	Water Condition
1.	JN Joint	5	69	5	3-10m Moderated	PR-Planar-Rough	P.4	3.1-0.5mm Closed	SW-Slighte Weathered	B-Underated Fresh Join. Wall	SS-Send/Sill	C-Complelt Dry
1.	JN Joint	5	69	5	3-10m Moderated	PR-Planar-Rough	P.4	3.1-0.5mm Closed	SW-Slighte Weathered	B-Underated Fresh Join. Wall	SS-Send/Sill	C-Complelt Dry
1.	JN Joint	5	69	5	3-10m Moderated	PR-Planar-Rough	P.4	3.1-0.5mm Closed	SW-Slighte Weathered	B-Underated Fresh Join. Wall	SS-Send/Sill	C-Complelt Dry
1.	JN Joint	5	69	5	3-10m Moderated	PR-Planar-Rough	P.4	3.1-0.5mm Closed	SW-Slighte Weathered	B-Underated Fresh Join. Wall	SS-Send/Sill	C-Complelt Dry
1.	JN Joint	5	69	5	3-10m Moderated	PR-Planar-Rough	P.4	3.1-0.5mm Closed	SW-Slighte Weathered	B-Underated Fresh Join. Wall	SS-Send/Sill	C-Complelt Dry
1.	JN Joint	5	69	5	3-10m Moderated	PR-Planar-Rough	P.4	3.1-0.5mm Closed	SW-Slighte Weathered	B-Underated Fresh Join. Wall	SS-Send/Sill	C-Complelt Dry
1.	JN Joint	5	69	5	3-10m Moderated	PR-Planar-Rough	P.4	3.1-0.5mm Closed	SW-Slighte Weathered	B-Underated Fresh Join. Wall	SS-Send/Sill	C-Complelt Dry
1.	JN Joint	5	69	5	3-10m Moderated	PR-Planar-Rough	P.4	3.1-0.5mm Closed	SW-Slighte Weathered	B-Underated Fresh Join. Wall	SS-Send/Sill	C-Complelt Dry
1.	JN Joint	5	69	5	3-10m Moderated	PR-Planar-Rough	P.4	3.1-0.5mm Closed	SW-Slighte Weathered	B-Underated Fresh Join. Wall	SS-Send/Sill	C-Complelt Dry
1.	JN Joint	5	69	5	3-10m Moderated	PR-Planar-Rough	P.4	3.1-0.5mm Closed	SW-Slighte Weathered	B-Underated Fresh Join. Wall	SS-Send/Sill	C-Complelt Dry
1.	JN Joint	5	69	5	3-10m Moderated	PR-Planar-Rough	P.4	3.1-0.5mm Closed	SW-Slighte Weathered	B-Underated Fresh Join. Wall	SS-Send/Sill	C-Complelt Dry
1.	JN Joint	5	69	5	3-10m Moderated	PR-Planar-Rough	P.4	3.1-0.5mm Closed	SW-Slighte Weathered	B-Underated Fresh Join. Wall	SS-Send/Sill	C-Complelt Dry
1.	JN Joint	5	69	5	3-10m Moderated	PR-Planar-Rough	P.4	3.1-0.5mm Closed	SW-Slighte Weathered	B-Underated Fresh Join. Wall	SS-Send/Sill	C-Complelt Dry
1.	JN Joint	5	69	5	3-10m Moderated	PR-Planar-Rough	P.4	3.1-0.5mm Closed	SW-Slighte Weathered	B-Underated Fresh Join. Wall	SS-Send/Sill	C-Complelt Dry
1.	JN Joint	5	69	5	3-10m Moderated	PR-Planar-Rough	P.4	3.1-0.5mm Closed	SW-Slighte Weathered	B-Underated Fresh Join. Wall	SS-Send/Sill	C-Complelt Dry
1.	JN Joint	5	69	5	3-10m Moderated	PR-Planar-Rough	P.4	3.1-0.5mm Closed	SW-Slighte Weathered	B-Underated Fresh Join. Wall	SS-Send/Sill	C-Complelt Dry
1.	JN Joint	5	69	5	3-10m Moderated	PR-Planar-Rough	P.4	3.1-0.5mm Closed	SW-Slighte Weathered	B-Underated Fresh Join. Wall	SS-Send/Sill	C-Complelt Dry
1.	JN Joint	5	69	5	3-10m Moderated	PR-Planar-Rough	P.4	3.1-0.5mm Closed	SW-Slighte Weathered	B-Underated Fresh Join. Wall	SS-Send/Sill	C-Complelt Dry
1.	JN Joint	5	69	5	3-10m Moderated	PR-Planar-Rough	P.4	3.1-0.5mm Closed	SW-Slighte Weathered	B-Underated Fresh Join. Wall	SS-Send/Sill	C-Complelt Dry
1.	JN Joint	5	69	5	3-10m Moderated	PR-Planar-Rough	P.4	3.1-0.5mm Closed	SW-Slighte Weathered	B-Underated Fresh Join. Wall	SS-Send/Sill	C-Complelt Dry

Log Rock - Open Pit Face Mapping

Files Edit **Graph** Help



Bench

Bench1 -390

- Window1
- Window1
- Window1
- Window1
- Window1
- Window1

+ Bench1 -390

+ Bench1 -390

+ Bench1 -390

+ Bench1 -390

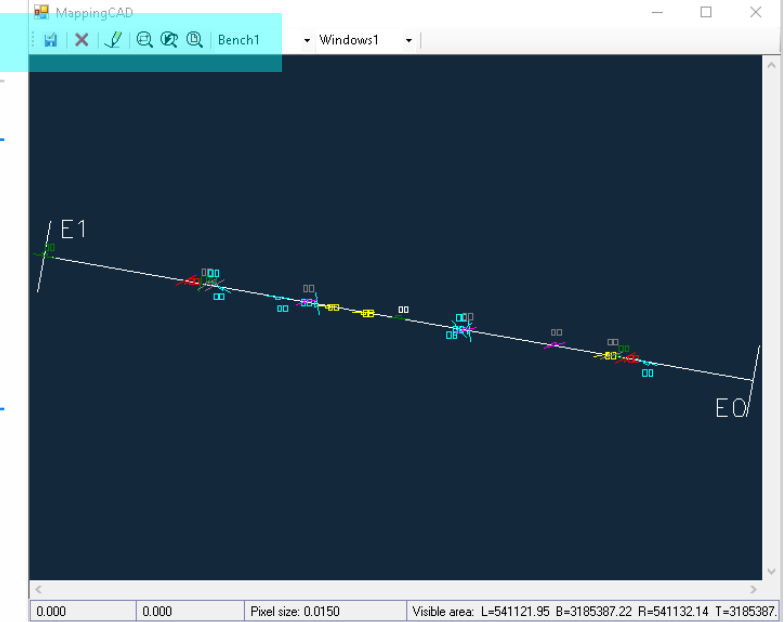
Window Mapping 1

Mapping Line

Mapping Line	Station distance	Starts Point coordinate	Face slope orientation
Start point: <input type="text"/>	Start point: <input type="text"/>	Start point: <input type="text"/>	Start point: <input type="text"/>
Start point: <input type="text"/>	Start point: <input type="text"/>	Start point: <input type="text"/>	Start point: <input type="text"/>
Start point: <input type="text"/>			

Mapping Line

Start point: Start point:



Log Rock - Open Pit Face Mapping

Files Edit Graph Help

New Open Close Save SaveAs Info Import Export Print Preview Setup Preferences Keyboard Exit

New Project

Files Edit Graph

File

Directory

File Name

General Information

Date

Company Name

Mine/ Project

Open Pit / Sector

Mapped by Add

Preview